

# Enrollment Trends and Forecasts Junction City School District

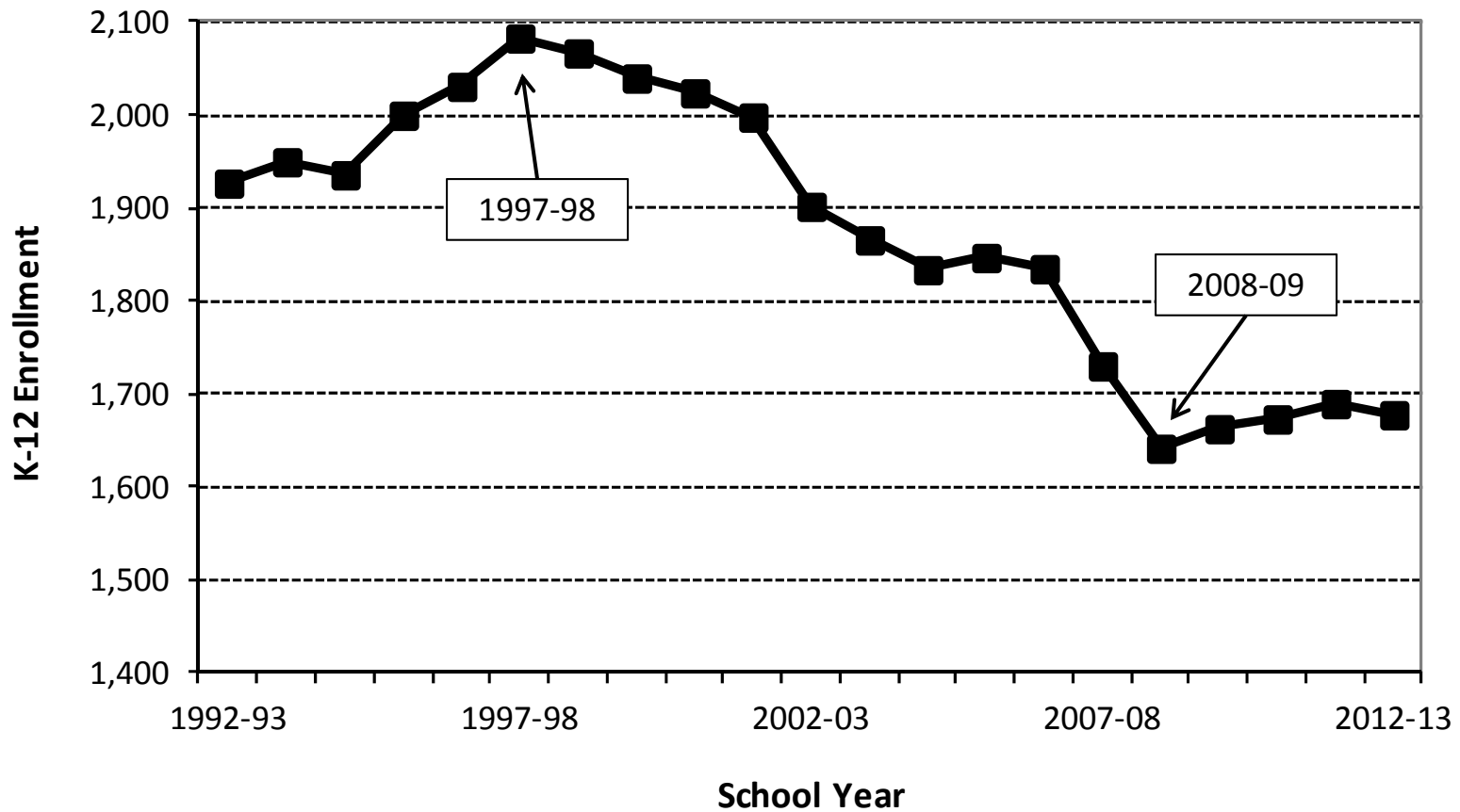
**February 25, 2013**



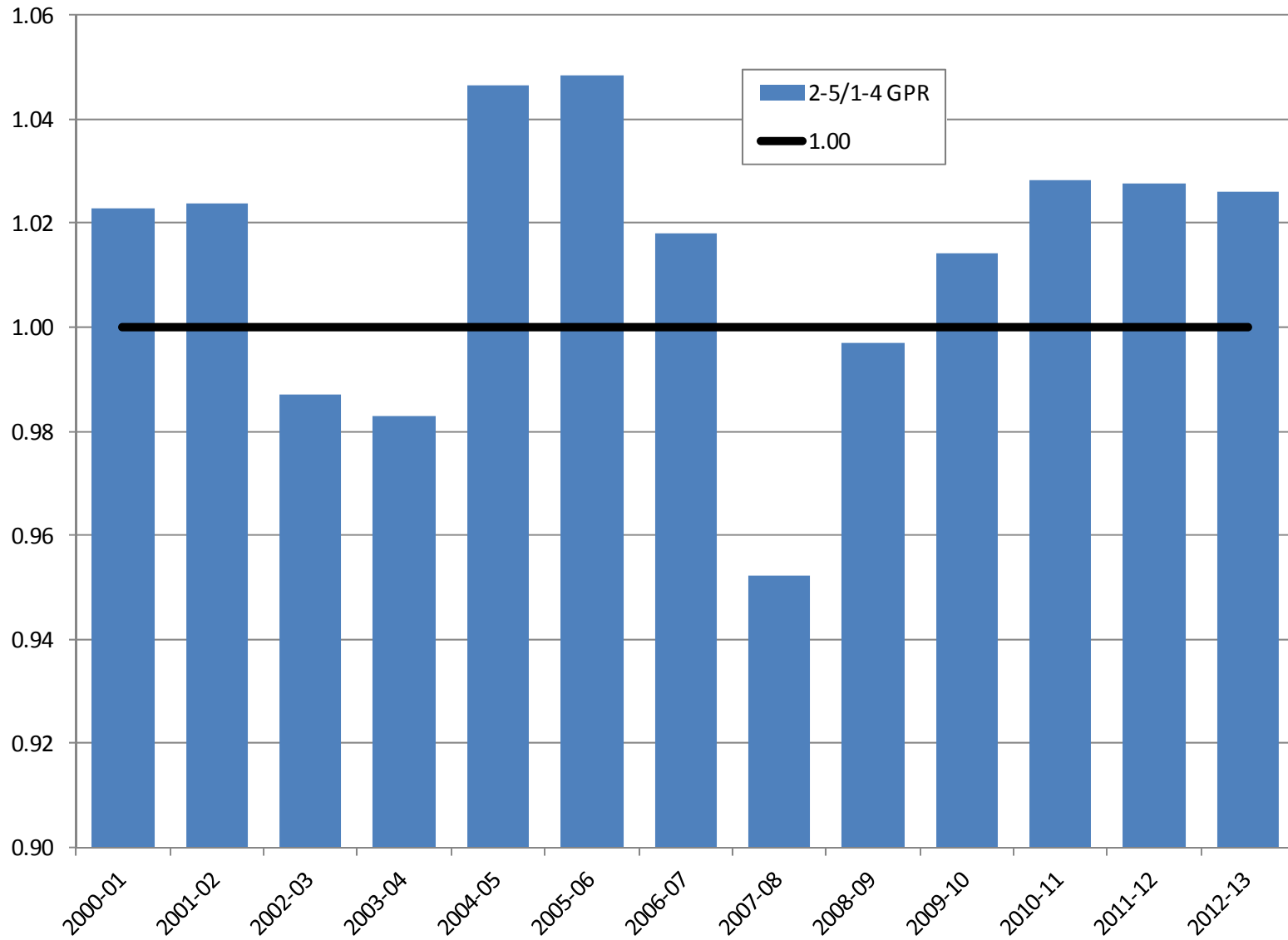
Charles Rynerson  
Research Associate  
Population Research Center  
College of Urban and Public Affairs



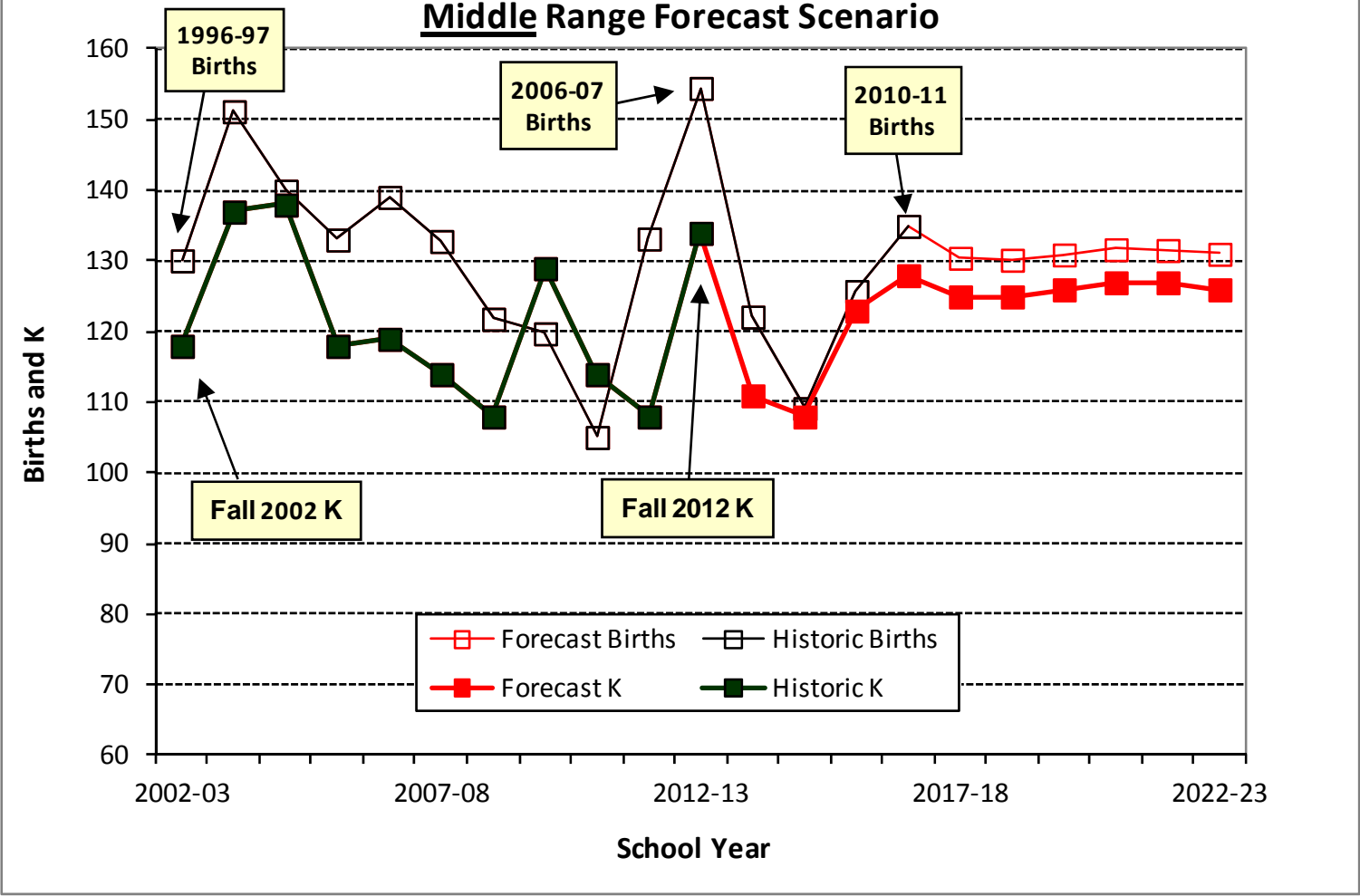
### JCSD K-12 Enrollment History 1992-93 to 2012-13



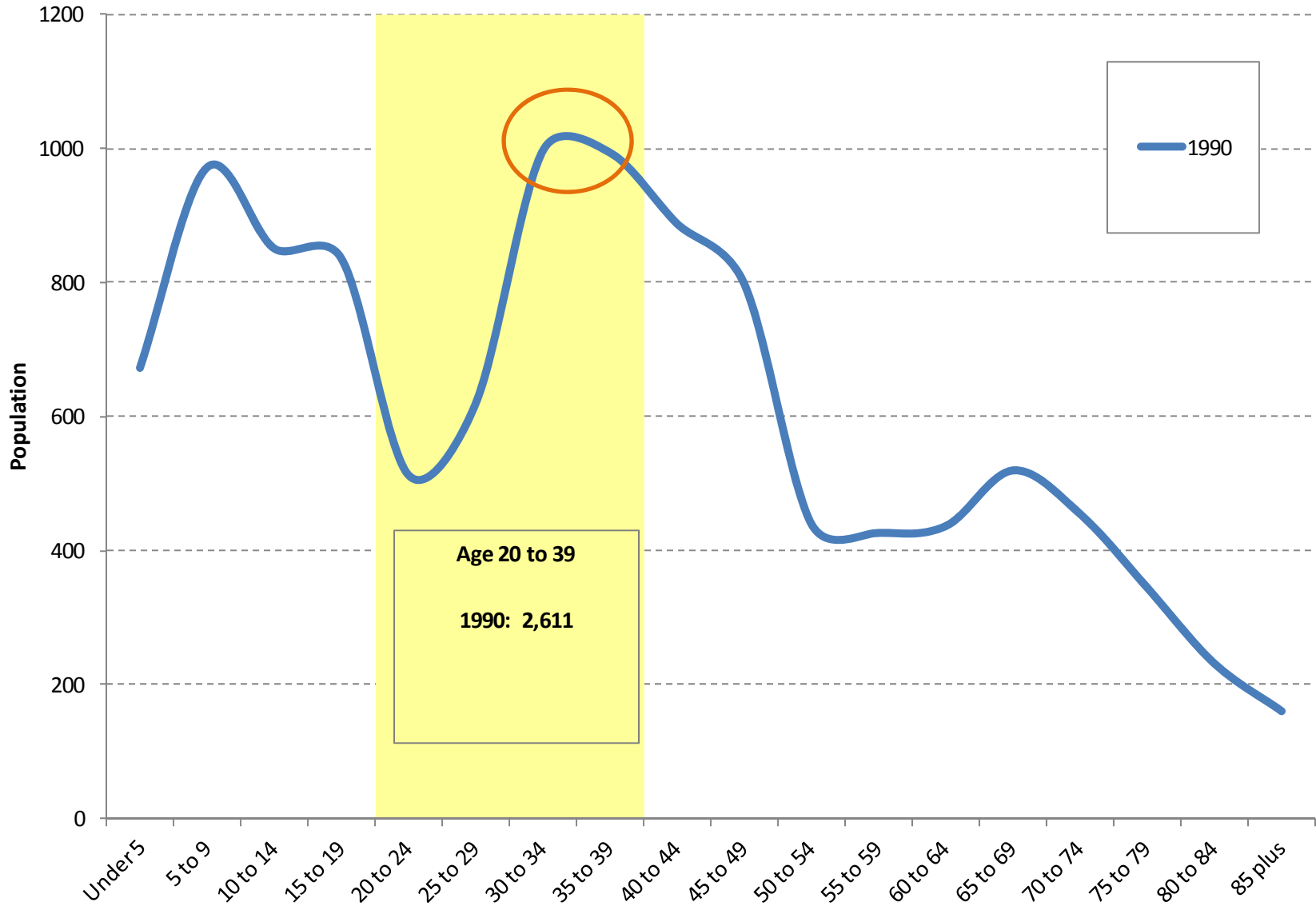
## Ratio of JCSD 2<sup>nd</sup>-5<sup>th</sup> Grade Enrollment to Previous Year's 1<sup>st</sup>-4<sup>th</sup> Grade Enrollment



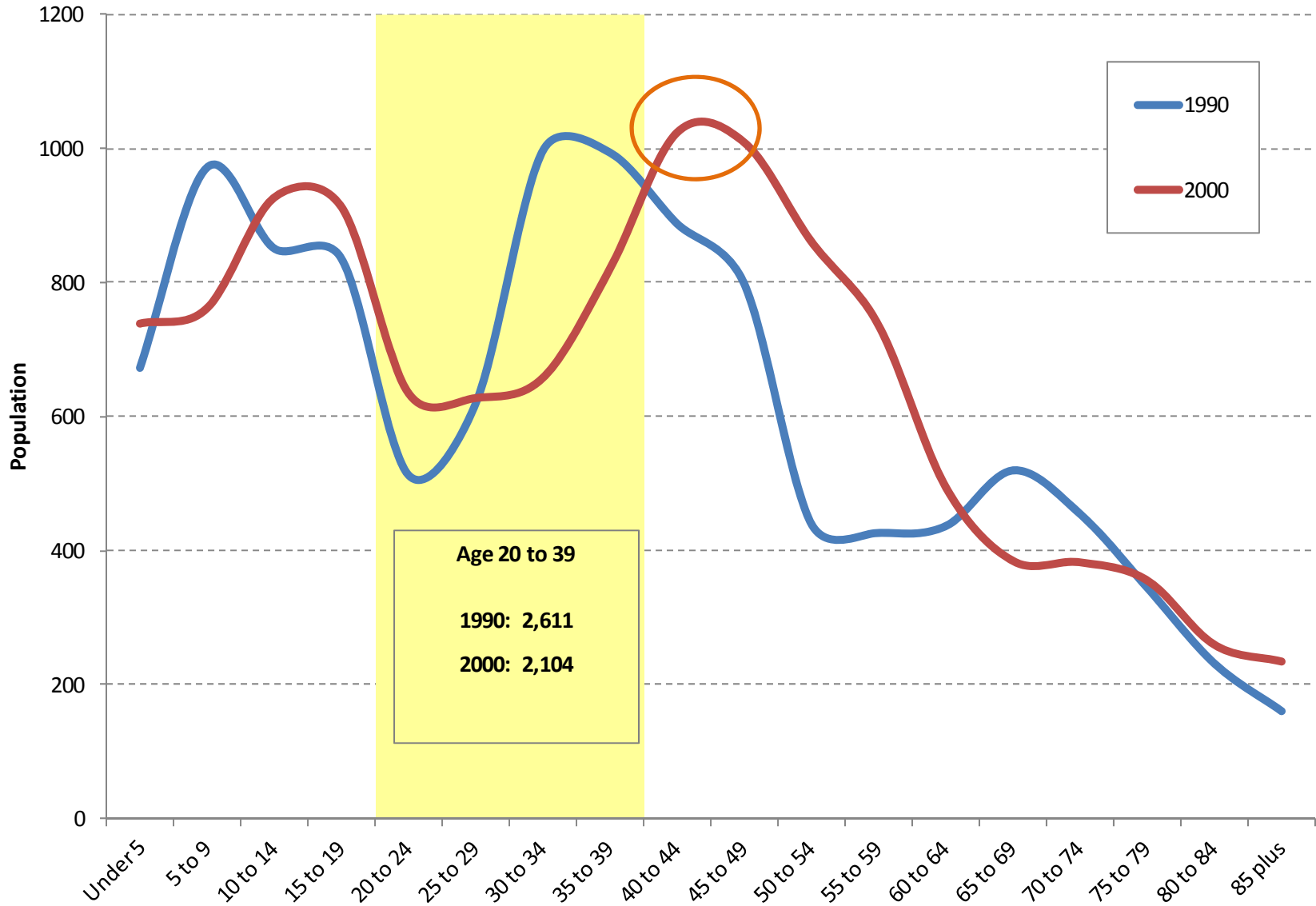
**Chart 4**  
**JCSD Birth Cohorts and Kindergarten Enrollment**  
**Middle Range Forecast Scenario**



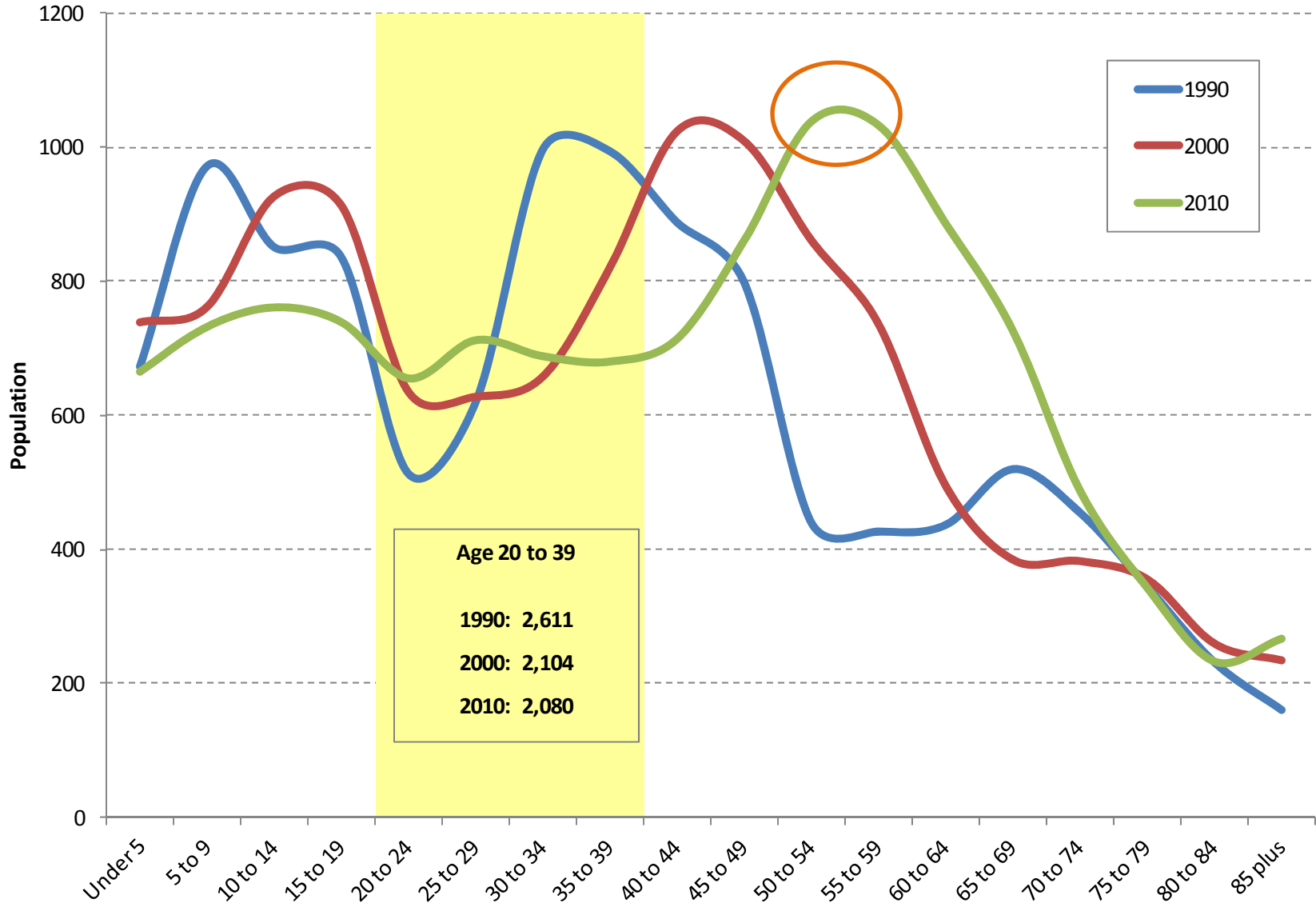
# Population by Age Group, Junction City School District



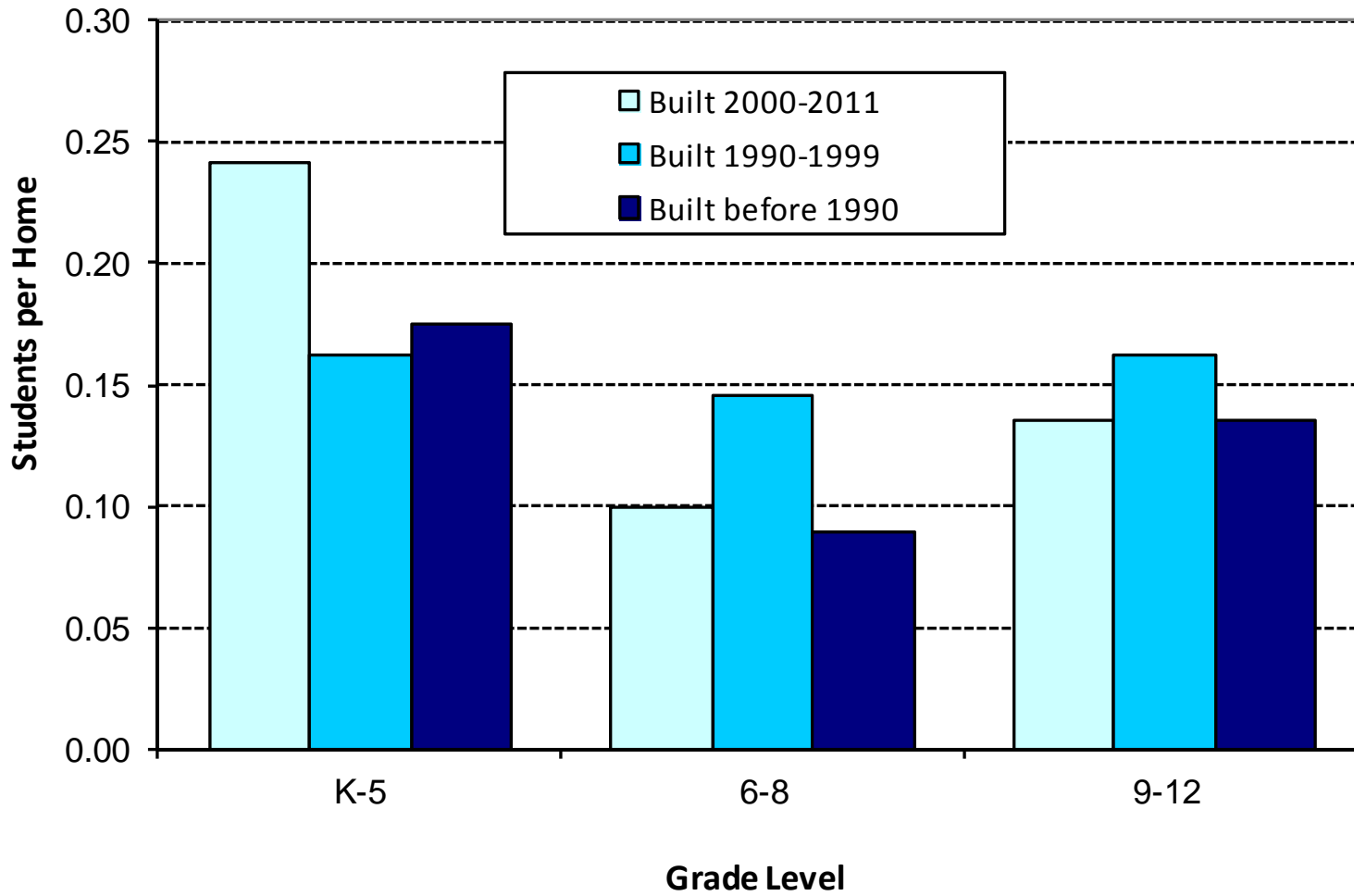
# Population by Age Group, Junction City School District



# Population by Age Group, Junction City School District

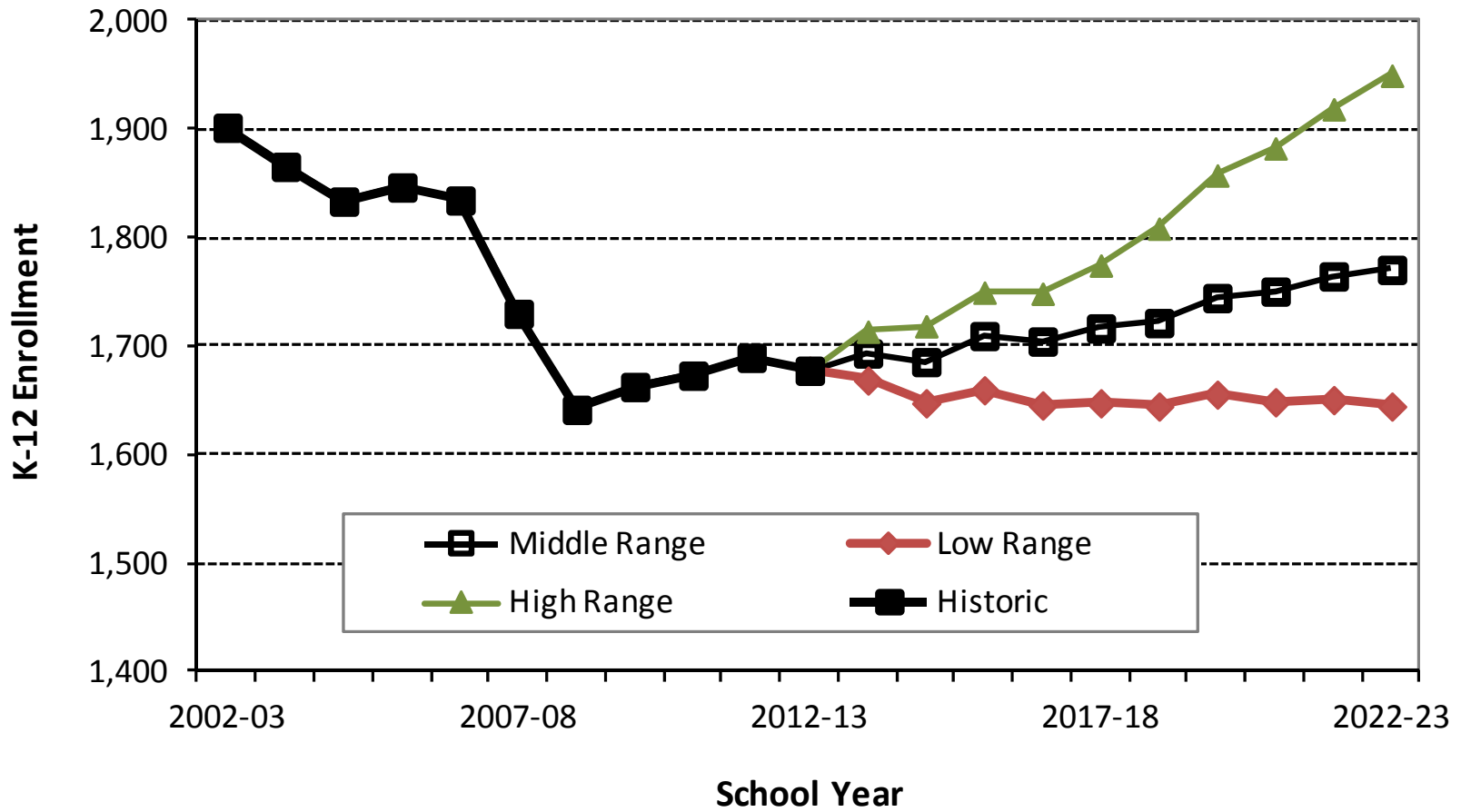


**Chart 2**  
**JCSD Students per Single Family Home**  
*City of Junction City, Fall 2012*





**Chart 1**  
**JCSD K-12 Enrollment History and Forecast**  
**2002-03 to 2022-23**



# Enrollment Trends and Forecasts Junction City School District

**February 25, 2013**



Charles Rynerson  
Research Associate  
Population Research Center  
College of Urban and Public Affairs

